



招 远

投资指南
Investment Guide

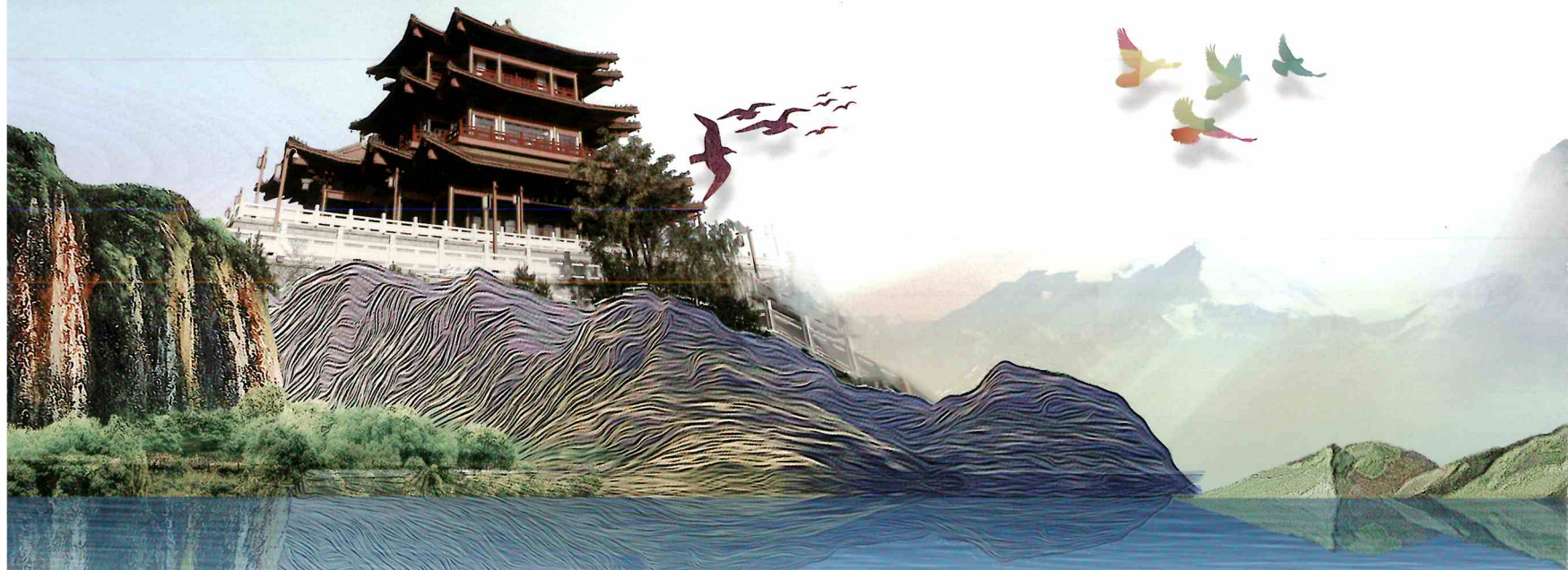






城市名片 / City Card

- ◆ **中国金都**
Gold Capital in China
- ◆ **中国粉丝之都**
Vermicelli Capital in China
- ◆ **中国红富士苹果之乡**
Hometown of Red Fuji Apple in China
- ◆ **中国县域经济百强县**
Top 100 Countries with Economic Strength in China
- ◆ **国家卫生城市**
National Sanitary City
- ◆ **国家环保模范城市**
National Environmental Protection Model City
- ◆ **中国优秀旅游城市**
China's Outstanding Tourist City
- ◆ **全省高质量发展先进县**
Advanced Country with High-quality Development in the Province



目录 / Contents



招远概览

Zhaoyuan Overviews



重点产业

Key Industry



招商载体

Investment Carrier



宜业宜居

Suitable for Business and Livable

罗山
Luo shan





关于招远 About Zhaoyuan

招远,取义《左传》“招携以礼,怀远以德”,蕴含“召唤远方客人,广纳八方英才”之意。地处胶东半岛西北部,陆域总面积 1432 平方公里,海域总面积约 210 平方公里,海岸线长 15 公里。现辖 5 个街道、9 个镇、1 个国家级经济技术开发区,总人口 54 万人,连续多年入选中国县域经济百强县、山东省对外开放强县、全省高质量发展先进县,被誉为“中国金都”“中国粉丝之都”。



Zhaoyuan, taking the meaning of "Winning the hearts of people around you with courtesy, and comforting those far away with virtue" in Zuo Zhuan, which implies that we should "call guests from afar and recruit talents from all over the world". Located in the northwest of Jiaodong Peninsula, it has a total land area of 1,432 square kilometers, a total sea area of about 210 square kilometers and a coastline of 15 kilometers. At present, it has jurisdiction over 5 streets, 9 towns and 1 national economic and technological development zone, with a total population of 540,000. It has been selected as one of the top 100 counties with economic strength in China, a strong county with opening up in Shandong Province, and an advanced county for high-quality development in the province for many consecutive years, Zhaoyuan is renowned as China's Gold Capital and China's Vermicelli Capital.





数读招远 Digital Zhaoyuan

54_{0,000}

人口
Population

1432_{sq.km}

土地面积
Land Area

15_{km}

海岸线
Coastline

1_↑

国家级经济技术开发区
National Economic and
Technological Development Zone

3_户

过百亿元企业
Enterprises Exceeding 10 Billion Yuan

25_户

上市及挂牌企业
Listed and Quoted Companies

黄金
Gold

黄金储量占全国的**1/9** 黄金产量占全国的**1/10**

Gold reserves account for 1/9 of the national amount. The gold output covers 1/10 of the national total production.

轮胎
Tyre

年产轿车子午胎占全国的**1/7**

The annual output of car radial tyres accounts for 1/7 of the national total amount.

粉丝蛋白
Vermicelli Protein

粉丝国内市场占有率**80%** 出口量占全国**85%**
豌豆蛋白占全球**50%** 花生蛋白占全国**65%** 出口量占全国**78%**

The domestic market share of vermicelli is 80%, and the export volume accounts for 85% of the national total.
Pea protein accounts for 50% of the world's total, peanut protein accounts for 65% of the national total and exports account for 78% of the national total.

绿色能源
Green energy

总装机容量 **970万** 千瓦

Total installed capacity of 9.7 million kilowatts.

新材料
New Materials

键合金丝占国内市场份额**50%** 金盐 银盐占国内市场份额**48%**

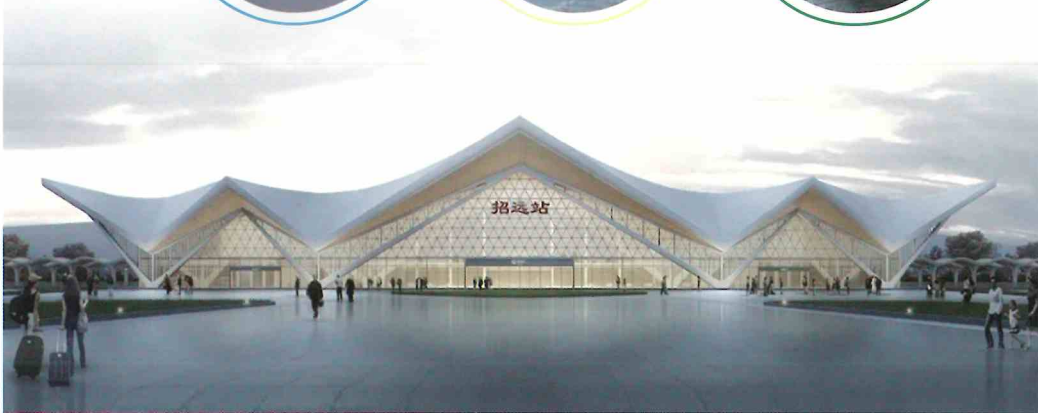
Bond alloy wire accounts for 50% of the domestic market share. Gold salt and Silver salt account for 48% of the domestic market share.



区位交通 Location and Transportation

招远毗邻烟台、青岛、龙口三大港口，环渤海潍烟高铁、德龙烟铁路、荣乌高速、龙青高速穿境而过，形成了九纵九横的现代城市交通框架。距蓬莱机场 50 分钟、距离青岛机场 90 分钟，距离龙口港 30 分钟。

Zhaoyuan is adjacent to the three major ports of Yantai, Qingdao and Longkou, Weifang - Yantai High - speed Railway around the Bohai Sea, De-Long-Yan Railway, Rongcheng-Wuhai Expressway and Longkou-Qingdao Expressway pass through it, forming a modern urban transportation framework with nine vertical and nine horizontal lines. It is 50 minutes from Penglai Airport, 90 minutes from Qingdao Airport and 30 minutes from Longkou Port.





高铁出行

招 远	约3小时	北京
	约4小时30分钟	上海
	约1小时30分钟	济南

航空出行

招 远	约50分钟	烟台蓬莱国际机场
	约90分钟	青岛胶州国际机场

海运出行

招 远	约30分钟	龙口港
	约1小时30分钟	烟台港
	约1小时50分钟	青岛港



招远
ZHAOYUAN



黄金产业

Gold Industry

黄金产业是招远市的特色支柱产业,拥有国内探、采、选、冶、精炼、珠宝首饰以及工业用金等最全的“黄金链条”,是中国产金第一大县(市)。黄金储量约占全国的1/9,黄金产量约占全国的1/10,居全国县级市之首。

The gold industry is a characteristic pillar industry in Zhaoyuan City. It has the most complete "gold chain" covering exploration, mining, dressing, smelting, refining, jewelry and industrial gold in China. It is the largest gold-producing county (city) in China. Gold reserves account for about 1/9 of the country's total, and gold production accounts for about 1/10 of the country's total, ranking first among county-level cities in China.



2002 年被中国黄金协会命名为“中国金都”
In 2002, it was named "Gold Capital in China"
by China Gold Association



黄金节盛况
Gold Festival



股票代码：
01818

招金矿业股份有限公司于2006年12月在香港主板市场成功上市

Zhaojin Mining Industry Co., Ltd. successfully listed on the Hong Kong Main Board Market in December 2006



股票代码：
002552

宝鼎科技于2020年1月被招金集团收购

Baoding Technology was acquired by Zhaojin Group in January 2020



探



冶



采



炼



金条



选



首饰



Key Industry
重点产业

轮胎及汽车制造服务产业

Tyre and Automobile Manufacturing Services Industry

招远已形成以轮胎、变速箱总成、齿轮、汽车座椅、驱动桥、刹车片等产品为主的零部件配套体系。山东玲珑轮胎股份有限公司是世界前 20、中国前 3 的行业上市企业，并与全球轮胎及汽车检测领军企业西班牙伊狄达公司强强联合建成中亚轮胎试验场，现已有奔驰、宝马、大众等 100 多家知名车企进驻，是亚洲最大室外综合性轮胎试验场。智能网联测试场：国内技术最先进、涵盖模拟应用场景最多。室内汽车检测实验室：技术全球一流、功能国内最全、规格行业最高。

Zhaoyuan has formed a parts supporting system mainly focusing on tyres, gearbox assemblies, gears, car seats, drive axles, brake pads and other products. Shandong Linglong Tyre Co., Ltd. is one of the top 20 listed companies in the world and one of the top 3 industrial listed companies in China. It has jointly built the Central Asia Tyre Test Ground with Spain's Edida Company, a global leader in tyre and automobile testing. Now there are Mercedes-Benz, BMW, Volkswagen, etc. more than 100 well-known car companies have settled in, and it is the largest outdoor comprehensive tyre testing ground in Asia. Intelligent network test field: the most advanced technology in China, covering the most simulation application scenarios. Indoor automobile testing laboratory: the technology is world-class, the functions are the most complete in China, and the specifications have the highest standard in the industry.



玲珑轮胎荣获国务院批准设立的“中国工业大奖”

Linglong Tyre Won the "China Industrial Award"
Approved by the State Council



股票代码: 601966

玲珑轮胎股份于2016年7月在上海主板上市
Linglong Tyre Incorporated Company Listed
on the Shanghai Main Board in July 2016



豪华行政座驾红旗国宾车原厂配套轮胎
Original Factory Tyre for the Luxury Executive Car - Hongqi State Guest



玲珑轮胎制定 “7+5”战略全球布局

亚洲功能最齐全、国内首个也是唯一的国际认证轮胎综合试验场

The Most Fully Functional Asian, the First and Only Domestic Comprehensive Testing Ground for Internationally Certified Tyres





粉丝蛋白产业

Vermicelli Protein Industry

招远被誉为“中国粉丝之都”，是“龙口粉丝”的发祥地和主产地。粉丝国内市场占有率 80% 以上，出口量占全国 85% 以上；豌豆蛋白占全球市场份额的 50% 以上，出口量占全国 85% 以上；花生蛋白占全国市场份额 65%，出口量占全国 85%。招远是全球最大的豌豆蛋白、花生蛋白生产基地。2018 年被商务部认定为“国家外贸转型升级粉丝蛋白基地”。

Zhaoyuan is known as the "Vermicelli Capital in China" and the birthplace and main producing place of "Longkou Vermicelli". The domestic market share of vermicelli is more than 80%, and the export volume accounts for more than 85% of the national total; pea protein accounts for more than 50% of the global market share, and its export volume accounts for more than 85% of the whole country; peanut protein accounts for 65% of the national market share, and its export volume accounts for 85% of the national market. Zhaoyuan is the largest production base of pea protein and peanut protein in the world. In 2018, it was recognized by the Ministry of Commerce as the "National Foreign Trade Transformation and Upgrading Vermicelli Protein Base".



双塔食品——国内粉丝行业唯一主板上市企业(股票代码:002481)
Shuangta Food – the only main board listed company in domestic vermicelli industry (stock code: 002481)



2002年被中国农学会命名为“中国粉丝之都”
In 2002, was given "Vermicelli Capital in China" by the China Agricultural Association



2014年“龙口粉丝”被列为国家非物质文化遗产名录
In 2014, "Longkou Vermicelli" was listed as a National Intangible Cultural Heritage List





2018年被商务部认定为“国家外贸转型升级基地”
In 2018, it was recognized as "National Foreign Trade Transformation and Upgrading Base" by the Ministry of Commerce



全球领先的豌豆蛋白智能化生产车间
The world's leading Intelligent Production Workshop for Pea Protein



双塔、三嘉、健源、鼎丰、优承、金都塔林、欧果等行业知名企业产品
Products from industrial famous enterprises such as Shuangta, Sanjia, Jianyuan, Dingfeng, Youcheng, Jindu Tallin, and Ouguo



新能源新材料产业

New Energy and New Materials Industry

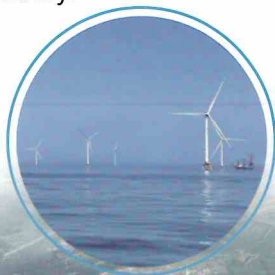
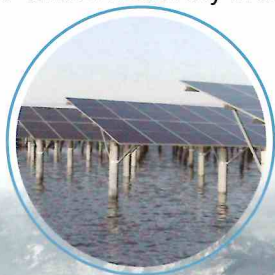


新能源

New Energy

招远是国家循环经济示范市，启动了总装机容量 970 万千瓦的绿色能源综合开发利用等项目，构建以核电为核心，以光伏、风电、氢能、储能为补充的“1+4”新能源产业体系。同时，大力开展以电招商、以汽招商、以碳税招商，充分释放“绿电”优势，打造全国领先的节能零碳样板城市。

Zhaoyuan is a national circular economy demonstration city. It has launched projects such as the comprehensive development and utilization of green energy with a total installed capacity of 9.7 million kilowatts, and built a "1 +4" new energy industry system with nuclear power as the core and photovoltaic, wind power, hydrogen energy and energy storage as supplements. At the same time, we will vigorously carry out investment promotion through electricity, automobile and carbon tax, fully release the advantages of "green electricity", and build a leading energy-saving and zero-carbon model city in the country.



 **新材料**
New Materials

招远现有电子新材料企业 40 余家，其中 2 家入围中国电子材料行业前 50 强，已经形成了以高档电解铜箔及覆铜板、键合金丝、集成电路、焊粉、金银靶材、蒸发金等为特色的电子材料产业群。贺利氏是国内最大的集成电路封装用键合丝生产厂家和全球技术领先的焊粉生产企业，公司主导产品键合金丝占国内市场份额 50%，是上海特斯拉的独家铝线供应商。金宝电子是中国电子材料行业协会常务理事单位、铜箔分会副理事长单位。招金励福是国内最大的电子化学品金盐、银盐生产企业，也是键合材料、溅射靶材的主要市场供应商，是国际半导体协会、中国半导体行业协会等会员单位。

There are more than 40 new electronic materials enterprises in Zhaoyuan, two of them have been shortlisted for the 50 in China electronic materials industry, and an electronic materials industry cluster featuring high-grade electrolytic copper foil and copper clad laminate, bond alloy wire, integrated circuit, solder powder, gold and silver targets, evaporated gold, etc. has been formed. Heraeus is the largest manufacturer of bonding wire for integrated circuit packaging in China and the world's leading solder powder manufacturer. The company's leading product bonding alloy wire accounts for 50% of the domestic market share, and it is the exclusive aluminum wire supplier of Shanghai Tesla. Jinbao Electronics is the executive director unit of China Electronic Materials Industry Association, the vice chairman unit of Copper Foil Branch. Zhaojin Kanfort is the largest manufacturer of gold salts and silver salts for electronic chemicals in China. It is also the main market supplier of bonding materials and sputtering targets, and a member unit of the International Semiconductor Association and the China Semiconductor Industry Association.





生物医药产业

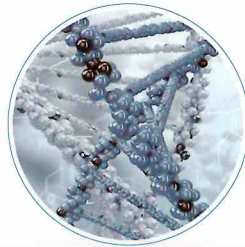
Biomedical Industry

招远深耕原料药、细胞药物、医用材料、医疗器械“四大板块”，目前已引进宁远药业、拓普生物、金赛生物、虹光健康等企业。

Zhaoyuan is deeply involved in the four major sectors of active pharmaceutical ingredients, cellular drugs, medical materials, and medical devices. Currently, it has introduced enterprises such as Ningyuan Pharmaceutical, Tuopu Biotechnology, Jinsai Biotechnology, and Hongguang Health.



原料药
API



细胞药物
Cellular Drugs



医用材料
Medical Materials



医疗器械
Medical Devices





宁远药业小分子创新药项目
Ningyuan pharmaceutical's Small Molecule Innovative Drugs Project



山东拓普生物培养基项目
Tuopu Biotech Culture Medium Project



金赛生物CAR-T细胞治疗药物生产项目
Jinsai Biotech CAR-T Cell Therapy Drug Production Project



虹光健康医用高分子材料项目
Hongguang Health Medical Polymer Materials Project





高端装备产业

High-end Equipment Industry

招远有绿色低碳智能制造企业近 80 家，其中矿山机械企业近 30 家。产品包括智能康养设备、橡胶机械、新能源设备、水处理设备、矿山机械和智能检测装备等，产业集群初具规模。重点企业：山东康泰智能科技股份有限公司是国家 863 计划重点项目中医按摩机器人实施单位，与日本松下数十年强强联合，设立康泰“松下事务所”；招金膜天的水处理膜产品在国内水处理行业名列前茅。

Zhaoyuan has nearly 80 green, low-carbon and intelligent manufacturing enterprises, including nearly 30 mining machinery enterprises. The products include intelligent health care equipment, rubber machinery, new energy equipment, water treatment equipment, mining machinery, and intelligent detection equipment, and the industrial cluster has begun to take shape. Key Enterprise: Shandong Kangtai Intelligent Technology Co., Ltd. is a key implementation unit for traditional Chinese medicine massage robots under the National 863 Program. It has formed a decades old alliance with Panasonic of Japan to establish Kangtai's "Panasonic Office"; Zhaojin Motian's water treatment membrane products are among the top in the domestic water treatment industry.



RK-9500九五智尊按摩椅
RK-9500 Jiuwuzhizun Massage Chair





招金膜天海水淡化、中水回用处理系统
Zhaojin Motian Seawater Desalination
and Reclaimed Water Reuse Treatment System



工业外观智能检测装备
Industrial Appearance Intelligent Detection Equipment



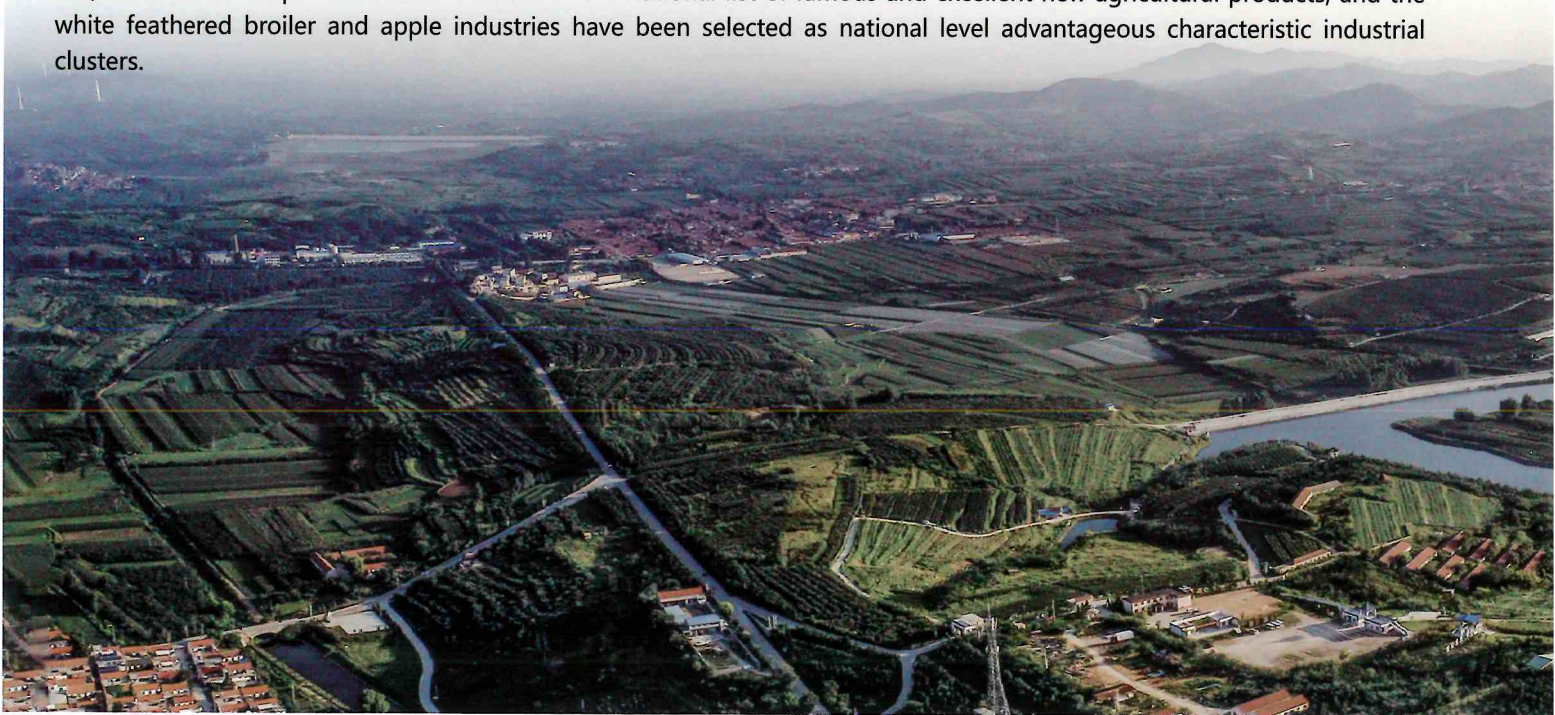


现代高效农业

Efficient Agriculture Now

招远拥有小麦、玉米、花生等 79 万亩粮食作物，苹果、葡萄、樱桃、蜜薯等 23 万亩经济作物，先后荣获“国家现代农业示范区”“国家出口农产品质量安全示范区”等荣誉称号，享有“中国红富士苹果之乡”的美誉。其中，“齐山蜜薯”“招远红茶”“大户葡萄”等 9 个农产品被纳入全国名特优新农产品名录，白羽肉鸡、苹果产业入选国家级优势特色产业集群。

Zhaoyuan has 790,000 mu of grain crops such as wheat, corn, and peanuts, as well as 230,000 mu of economic crops such as apples, grapes, cherries, and sweet potatoes. It has won honors such as "National Modern Agriculture Demonstration Zone" and "National Export Agricultural Product Quality and Safety Demonstration Zone" and enjoys the reputation of "Hometown of Red Fuji Apple in China". Among them, 9 agricultural products such as "Qishan Sweet Potato," "Zhaoyuan Black Tea," and "Dahu Grape" have been included in the national list of famous and excellent new agricultural products, and the white feathered broiler and apple industries have been selected as national level advantageous characteristic industrial clusters.





山东省首批乡村振兴齐鲁样板示范区
The First Batch of Rural Revitalization Qilu Model Demonstration Zones in Shandong Province



国家级招远经济技术开发区

Zhaoyuan Economic and Technological Development Zone

招远经济技术开发区于 1992 年经山东省政府批准设立，2011 年 9 月经国务院批准晋升为国家级经济技术开发区，现管辖面积 77.5 平方公里。目前，有高新技术企业 100 余家，上市及挂牌企业 9 家。先后荣获“全国最适宜人居新城区”“国家级绿色工业园区”“全省对外开放先进园区”等荣誉。规划形成以绿色低碳智能制造产业园为核心区，以中德新材料、双创示范、生物医药、健康食品等园区为特色的产业集聚平台。



Zhaoyuan Economic and Technological Development Zone was established in 1992 with the approval of Shandong Provincial Government, and was promoted to a national economic and technological development zone with the approval of the State Council in September 2011. It now covers an area of 77.5 square kilometers. At present, there are more than 100 high-tech enterprises and 9 listed and quoted enterprises. It has successively won the honors of "the most suitable new urban area for people living in China", "national green industrial park" and "advanced park for opening up to the outside world in the whole province". It is planned to form an industrial agglomeration platform with a green and low-carbon intelligent manufacturing industrial park as the core area and featuring Sino-German new materials, mass entrepreneurship and innovation demonstration, biomedicine, health food and other parks.





绿色低碳智能制造产业园

Green, low-carbon, Intelligent
Manufacturing Industrial Park

规划面积 5500 亩，依托核电、海上光伏等延链补链，充分利用核能绿电及产生的汽、热、冷资源，重点发展绿色低碳、精密智能、AI 人工智能等产业，争创以核能综合利用为特色的零碳智慧园区。

With a planned area of 5,500 mu, relying on nuclear power, offshore photovoltaics and other extended and supplemented chains, fully utilizing nuclear energy green electricity and the generated steam, heat, and cold resources, focusing on the development of green low-carbon, precision intelligence, AI artificial intelligence and other industries, striving to create a zero carbon smart park with comprehensive utilization of nuclear energy as its characteristic.



中德新材料产业园

Sino-German New Materials Industrial Park

规划面积 3000 亩，依托鲁鑫集团与德国贺利氏集团 30 多年的深度合作，围绕新一代信息技术、新材料、智能终端等领域，打造国内一流中德合作示范区。

With a planned area of 3,000 mu, relying on the in-depth cooperation between Luxin Group and Heraeus Group of Germany for more than 30 years, it will build a first-class Sino-German cooperation demonstration zone in China based on the new generation of information technology, new materials, intelligent terminals and other fields.



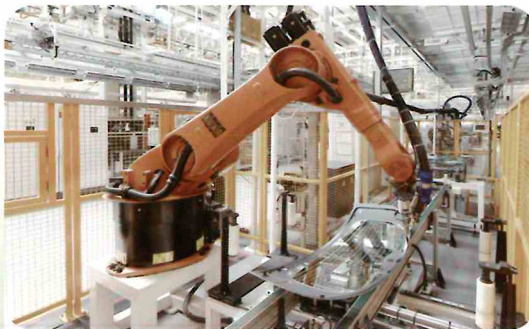
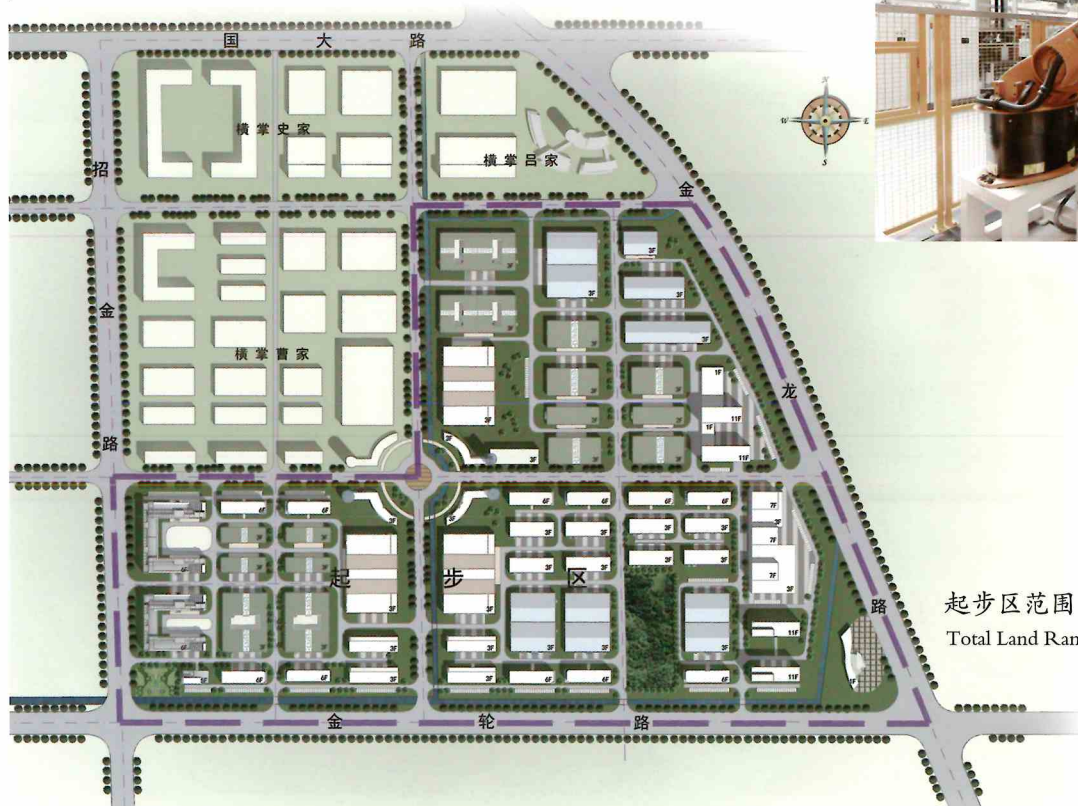


双创示范园

Mass Entrepreneurship and Innovation Demonstration Park

规划面积 1220 亩，重点突出“创业创新”理念，发展独角兽、瞪羚、高新技术和“专精特新”等高新技术企业，打造省内一流、国内有影响力的特色产业园区。

With a planned area of 1,220 mu, focusing on the concept of "entrepreneurship and innovation", developing unicorn, gazelle, high-tech and SRDI high-tech enterprises and building a first-class industrial park in the province and influential in China.



起步区范围总用地：51公顷

Total Land Range of Starting Area : 51 Hectares

生物医药产业园

Biomedical Industrial Park

规划面积 1800 亩，分为公共服务区、生物制药区、化学药区、医疗器械区和中药区 5 大功能区，打造“金都药谷”。

With a planned area of 1,800 mu, it is divided into five functional areas: public service area, biopharmaceutical area, chemical medicine area, medical device area and traditional Chinese medicine area, so as to create a "Gold Capital Pharma Valley".





招商载体
Investment Carrier

健康食品产业园

Health Food Industrial Park

规划面积 1275 亩，围绕特医食品、营养保健食品、功能性饮料、素肉食品、淀粉附加值提升、婴幼儿配方食品六个特色板块，打造省级健康食品产业园示范区。

With a planned area of 1,275 mu, we will build a provincial health food industrial park demonstration area around six characteristic sectors: special medical food, nutritious health food, functional beverage, vegetarian meat food, starch added value enhancement and invermicellit formula food.





营商环境

Business Environment

招远全面推行“高效审批”“一窗受理”“一次办好”等改革，打造“阳光政务·金牌服务”营商品牌。招远市在国家公共信用信息中心最新一期发布的县级城市信用监测排名中，全国排名第3。

Zhaoyuan Comprehensively promote reforms such as "efficient approval", "one-stop acceptance", and "one-stop service", and create a "Sunshine Government and Gold Medal Service" business brand. Zhaoyuan ranks third nationwide in the latest county-level city credit monitoring ranking released by the National Public Credit Information Center.



- 高效审批
Efficient Approval
- 一窗受理
One-Stop Acceptance
- 一次办好
One-Stop Service



科技创新

Scientific and Technological Innovation

招远拥有国家级高新技术企业 160 余家，国家级实验室和技术中心 3 个，省级创新平台、研究中心和技术中心 40 余家，并与国内外大学、科研院所和企业搭建合作交流平台，推动科技成果转移转化，以科技创新引领地方高质量发展。

Zhaoyuan has more than 160 national high-tech enterprises, 3 national laboratories and technology centers, and more than 40 provincial innovation platforms, research centers, and technology centers. It has also established cooperation and exchange platforms with domestic and foreign universities, research institutes, and enterprises to promote the transfer and transformation of scientific and technological achievements, and to lead local high-quality development with scientific and technological innovation.



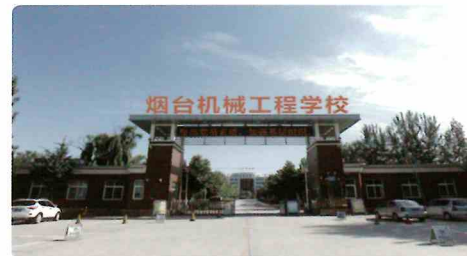
玲珑集团轮胎噪声实验室
Linglong Group Tyre Noise Laboratory

人力要素

Human Resources

招远有烟台黄金职业学院、烟台机械工程学院、玲珑集团技工学校、山东金都经纶职业培训学校等专业院校，在校生 20000 余人，每年毕业 6000 余人。

Zhaoyuan has a Yantai Gold Vocational College, Yantai Mechanical Engineering School, Linglong Group Technical School, Shandong Jindu Jinglun Vocational Training School and other professional colleges in the city, with more than 20,000 students and more than 6,000 graduates every year.



烟台黄金职业学院
Yantai Gold Vocational College





医疗保障

Medical Insurance

招远有人民医院（公立二级）、英诚医院（民营三级）、中医医院（公立二级）、心理康复医院（公立二级）等 10 家综合及专科医院。设有床位数 2848 张，卫生专业技术人员 4231 人。

There are 10 general and specialized hospitals in Zhaoyuan, including People's Hospital (public Grade II), Yingcheng Hospital (private Grade III), Traditional Chinese Medicine Hospital (public Grade II) and Psychological Rehabilitation Hospital (public Grade II), with 2,848 beds and 4,231 healthcare industrial professionals.



精品旅游

Boutique Tourism

招远“金、泉、山、海”等旅游资源丰富，拥有罗山国家森林公园、97℃的天然温泉、2700公顷砂质黄金海岸，是中国优秀旅游城市。近年来，以国际黄金产业发展大会、中国皮草节等活动为主题，以黄金博物馆、中国龙口粉丝博物馆、黄金珠宝首饰城、招远皮革城、金镇为基础，开发形成了四条精品旅游线路。

Zhaoyuan is rich in tourism resources such as "gold, springs, mountains, and seas", with Luoshan National Forest Park, 97℃ natural hot springs, and 2700 hectares of sandy gold coast. It is an excellent tourist city in China. In recent years, with the theme of the International Gold Industry Development Conference, China Fur Festival and other activities, and based on the Gold Museum, China Longkou Vermicelli Museum, Gold Jewelry City, Zhaoyuan Leather City and Golden Town, four boutique tourism routes have been developed.



黄金博物馆
Gold Museum



中国龙口粉丝博物馆
China Longkou Vermicelli Museum



黄金珠宝首饰城
Gold Jewelry City



招远皮革城
Zhaoyuan Leather City



金镇
Golden Town



■ 招远市投资促进中心

地址: 招远市泉山路 27 号
电话: 0086-535-8092200
邮箱: zystzcjbg@yt.shandong.cn

■ 招远经济技术开发区管理委员会

地址: 招远市金晖路 271 号
电话: 0086-535-8159001
邮箱: zykggw@yt.shandong.cn

■ 招远市商务局

地址: 招远市温泉路 378 号
电话: 0086-535-8214673
邮箱: zyswj@yt.shandong.cn

■ 招远市行政审批服务局

地址: 招远市温泉路 111 号
电话: 0086-535-8166783
邮箱: zysspj@yt.shandong.cn

■ Zhaoyuan Investment Promotion Center

Address: 27, Quanshan Road, Zhaoyuan City
Phone: 0086-535-8092200
E-mail: zystzcjbg@yt.shandong.cn

■ Management Committee of Zhaoyuan Economic and Technological Development Zone

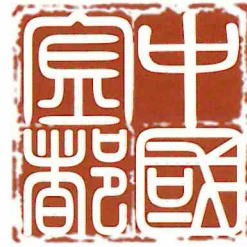
Address: 271, Jinhui Road, Zhaoyuan City
Phone: 0086-535-8159001
E-mail: zykggw@yt.shandong.cn

■ Zhaoyuan Bureau of Commerce

Address: 378, Wenquan Road, Zhaoyuan City
Phone: 0086-535-8214673
E-mail: zyswj@yt.shandong.cn

■ Zhaoyuan Administrative Approval Service Bureau

Address: 111, Wenquan Road, Zhaoyuan City
Phone: 0086-535-8166783
E-mail: zysspj@yt.shandong.cn



中国金都·山东招远
Gold Capital in China · Zhaoyuan Shandong
